

3M Quiz

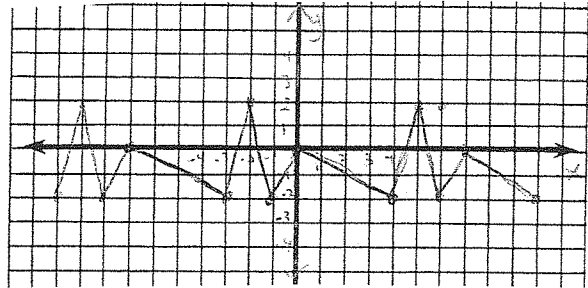
$$\frac{15+1}{16} = \frac{\quad}{16}$$

Name _____

1. Given the graph of the periodic function, $f(x)$, determine: [6]

- a) period _____
- b) max value _____
- c) min value _____
- d) amplitude _____
- e) $f(4)$ _____
- $f(32)$ _____

$y = f(x)$



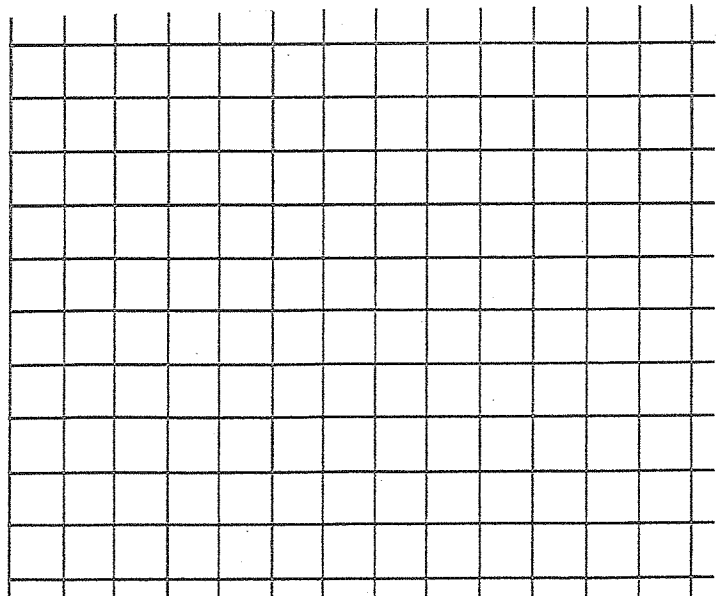
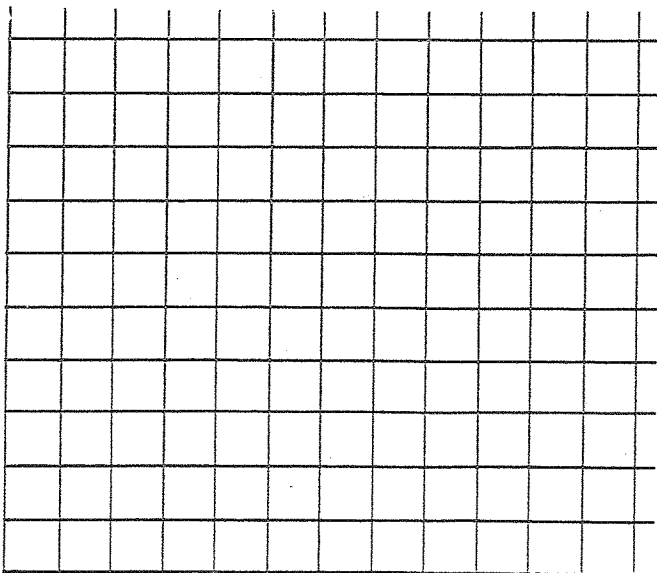
2. Complete the table. [3]

Equation	Period	Amplitude
$y = 5 \sin 3x$		
$y = \frac{1}{2} \cos(\frac{1}{3}x)$		
	4 90°	8

3. Graph one cycle of each of the following. [6]

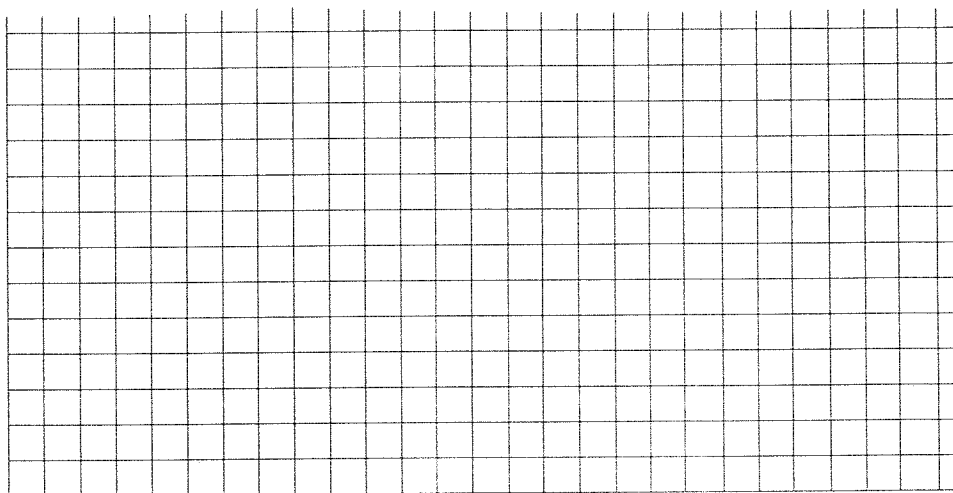
a) $y = 2 \sin(\frac{1}{4}x)$

b) $y = \frac{1}{3} \cos(2x)$



For each of the following, state the reflection, amplitude, period, phase shift, scale and vertical shift. Then graph one cycle of each function.

1. $y = -3 \sin(5x) + 2$



2. $y = 4 \cos(2x - 90) - 3$

